



LED sightglass light fittings for applications in hazardous and safe areas

Overview



Micro-LED sightglass light fitting, type MVLR 2 LED, mounted onto metal fused sightglass for Triclamp® fittings, DN 50, PN 16



miniLUX LED sightglass light fitting, type BKVLR LED, mounted onto metal fused flange for sterile applications



metaLUX LED sightglass light fitting, type HL 200 LED, on sightglass to DIN 2810, DN 200, PN 10

MAX MÜLLER AG closely observes the development of the LED technology for years and may therefore present a wide range of innovative sightglass light fittings for applications either in hazardous or in safe areas. The LED versions offer the following advantages:

- UV-free and cold light output
- Extremely long life span (ca 20'000 - 40'000 operating hours), thus making periodic maintenance unnecessary
- Very high lighting power at small consumption
- Suitable for continuous operation
- Housings and fixations from stainless steel or cast aluminium alloy, depending on application
- Light fittings can be combined with window wipers or spraying devices, depending on type and application

Application:

On sightglasses to DIN 28120 from DN 25
On sightglasses to DIN 28121 from DN 40
On screwed sightglasses similar to DIN 11851 from DN 32
On pipeline flow indicators (in-line sightglasses)
On metal fused sightglasses

Enclosure protection degree:

IP 65, dust and spray water tight, to EN 60529 / DIN VDE 0470 part 1.

Short overview on available types for applications in safe areas:

miniLUX Micro-LED, series MVLR

- Entirely in stainless steel
- Terminal voltage 22 - 26 V AC / DC
- Power ca. 2 W
- Available for continuous, momentary or "ON-OFF" operation
- Fixation by means of collar flange or tilting hinge

miniLUX, series BKVLR LED

- Entirely in stainless steel
- Terminal voltage 24 V AC / DC
- Power ca. 1 W
- Available for continuous, momentary or "ON-OFF" operation
- Fixation by means of collar flange or tilting hinge
- Particularly recommended for use on pipeline flow indicators

metaLUX, series HL, HLM or HLMR LED

- Housings from cast aluminium alloy (HL LED), cast aluminium alloy painted (HLM LED) or stainless steel (HLMR LED)
- Terminal voltage 24 V AC / DC
- Power ca. 2 - 6 W, depending on type
- Available for continuous, momentary or "ON-OFF" operation
- For direct mounting onto sightglasses to DIN 28120 / 28121 and similar to DIN 11851



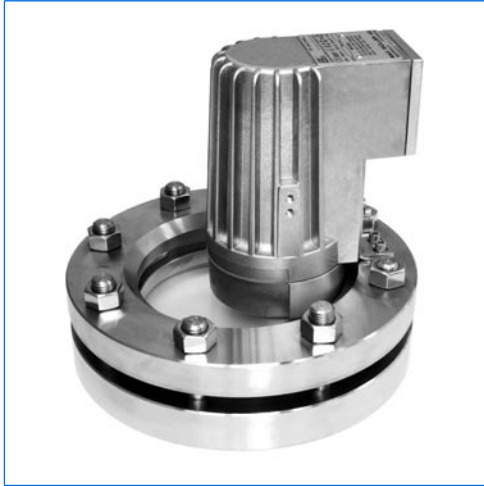
MAX MÜLLER AG

Europe's largest sightglass light fitting programme!
Perfect, thoroughly engineered solutions from one hand!
Always an interesting, technically advanced idea ahead!



LED sightglass light fittings for applications in hazardous and safe areas

Overview



CHEMLUX LED sightglass light fitting, type HEL de LED-F W, Ex de II C T6, Ex tD A21 IP 65 T80°C, Ex II G + D, mounted onto sightglass to DIN 28120, DN 125, PN 10



EdelLUX LED sightglass light fitting, type EdelEx LED, Ex d II C T6, Ex tD A21 IP 65 T80°C, Ex II G + D, mounted onto metal fused sightglass for Triclamp® fittings, DN 50, PN 16

Branch office / exclusive agent:

Short overview on available types for applications in safe areas (cont'd):

CHEMLUX, series FHL LED

- Terminal voltage 100 - 240 V AC, depending on type
- Power ca. 4 - 7 W, depending on type
- Available for continuous, momentary or "ON-OFF" operation
- Fixation by means of collar flange, side feet or mounting bracket

Short overview on available types for applications in hazardous areas:

CHEMLUX, series HEL LED / FHEL LED

- Terminal voltage 100 - 240 V AC, depending on type
- Power ca. 4 - 7 W, depending on type
- (Ex)-classification: Ex d or de II C T6, Ex tD A21 IP 65 T80 °C, Ex II G + D
- Available for continuous, momentary or "ON-OFF" operation
- Fixation by means of collar flange, side feet or mounting bracket

EdelLUX, series EdelEx LED

- Entirely in stainless steel
- Terminal voltage 24 V AC / DC or 100 - 240 V AC
- Power ca. 2 - 5 W, depending on type
- (Ex)-classification: Ex d II C T6, Ex tD A21 IP 65 T80 °C, Ex II G + D
- Available for continuous operation or with external timer
- Fixation by means of collar flange or tilting hinge

Ask for detailed information or for an offer!

Do you wish for more information about our wide range of light fittings for use in hazardous and safe areas, camera systems for hazardous areas, about our range of circular sightglasses to DIN 28120/28121, screwed sightglasses similar to DIN 11851, rectangular or D-ended sightglasses, pipeline flow indicators, centrally or sideways operated wipers, hinged sightglasses, spraying devices or our complete sight and lightglass units VETROLUX®? Are you interested in other types, special versions or different protection degrees? If yes, please contact us, our branch office or our local agents – it is our business! You will find the necessary indications about our sales network on the Internet.

All dimensions in mm. Subject to changes without preliminary notice.



MAX MÜLLER AG

PROCESS ILLUMINATION AND VISUAL OBSERVATION SYSTEMS

Hagmattstrasse 19 • CH - 4123 Allschwil / Switzerland

Telephone +41 61 487 92 92 • Telefax +41 61 487 92 99

www.maxmuellerag.com E-Mail: blt@maxmuellerag.com

02.11