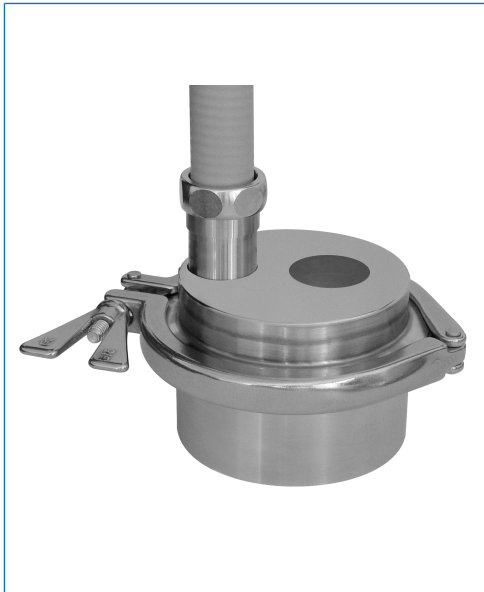
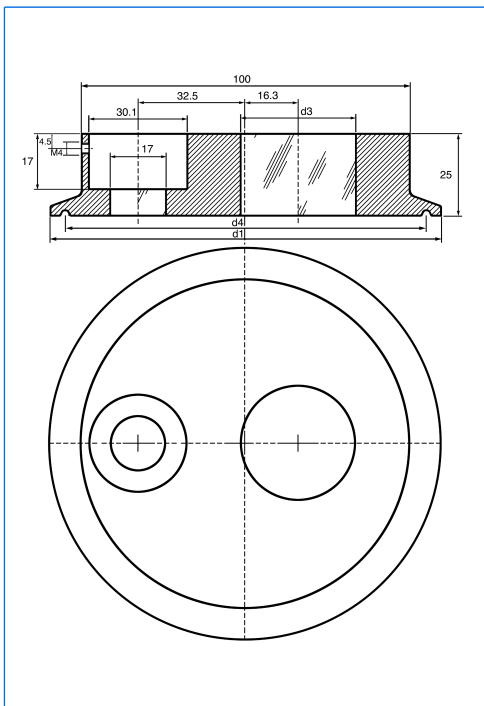


# Metal fused sightglasses for "view and light" for Triclamp fittings for sightglass light fittings series fibroLUX (E) for use in hazardous and safe areas



Metal fused sightglass, 4", with lightpipe end of the fibroLUX fibre optic sightglass light fitting



Dimensions

All dimensions in mm. Subject to changes without preliminary notice.

#### Applications:

- For clamp fittings to DIN 32676 / ISO 2852

#### Advantages:

- For sterile applications
- High security
- Easy installation
- Allows the combination "view and light through one sightglass" in DN 100 / 4"
- Brilliant and glare free illumination

#### Metal fused sightglass:

##### Approvals:

A3 Standard for food processing

##### Technical data:

- Test base: DGRL 97 / 23 / EG, AD 2000 standards, DIN 7079-1 May 1999
- Materials to VdTÜV specifications and the respective DIN / EN standards
- Glass quality: Borosilicate glass to DIN 7080

##### Certificates:

- To be supplied against extra charge to DIN EN 10204

##### Operating conditions:

- Pressure: -1 to 10 bar
- Temperatures:
 

Ring materials:	1.4462:	-30 °C to +280 °C
	2.4602:	-60 °C to +300 °C

#### Sightglass light fitting series fibroLUX 5035 / fibroLUX E 5035:

- Supply: AC or DC  
24, 36, 42, 115, 230, 240 V AC with integrated transformer  
12 / 24 V AC / DC without integrated transformer
- Power: 35 W (50 W with supply voltage of 24 V AC / DC)
- Materials: Housing: Aluminium alloy (Anticorodal) (fibroLUX 5035)  
Stainless steel (fibroLUX E 5035)  
Lightpipe: Galvanized steel, enclosed in silicone rubber tube  
Ferrules: Stainless steel
- Protection mode: IP 65, dust and spray water tight to EN 60529 / DIN VDE 0470 part 1
- Ignition protection type: Ex de to EN 60079-0 / 60079-1 / 60079-7 (fibroLUX 5035),  
Ex d to EN 60079-0 / 60079-1 (fibroLUX E 5035)  
Ex tD A21 IP65 to EN 61241-0 / 61241-1
- Explosion group: IIC
- Temperature classes G / D: T4 / T130°C (T3 / T195°C with supply voltage of 24 V AC / DC)  
T<sub>a</sub> = - 20°C / + 40°C (T<sub>a</sub> up to + 60°C on request)
- ATEX: Ex II 2 G + D

For more technical details see data sheet fibroLUX 5035 / fibroLUX E 5035

#### Dimensions:

Nominal diamter (DN)		d1	d3	d4	Max. operating pressure (bar)
DN	inch				
100	4"	119	35	110	10