

Micro LED sightglass light fittings

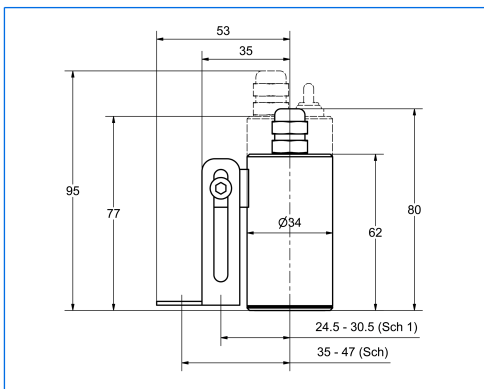
Series MVLR in stainless steel for use in safe areas



Micro LED light fitting, type MVLR 2 LED, 2 W, 24 V AC/DC, mounted on metal fused sightglass for Triclamp® fitting, DN 50, PN 16



Micro LED light fitting, MVLR 2 LED E Sch1, 2 W, 24 V AC/DC, with integrated ON-OFF switch "E", mounted on VETROLUX screwed sightglass similar to DIN 11851, DN 32, PN 6



All dimensions in mm. Subject to changes without preliminary notice.

The micro LED sightglass light fittings of the series MVLR **entirely in stainless steel** offer the following main features and advantages:

- **Extremely small** dimensions
- Very interesting prices due to high series production
- Only **one** size for use on different sightglass diameters
- Housing of **high surface finish**, especially adapted for applications in clean and sterile areas
- **Brilliant, powerful, dazzle free** and **homogeneous** illumination due to state-of-the-art LED technology
- **UV-free and cold** light output
- Very long **life span** (approximately 35'000 operating hours)
- Insensitive to vibrations
- Suitable for **continuous operation**
- On request to be delivered with ON-OFF switch (type designation "E") or with built-in lever push-button for momentary operation (type designation "D")
- **Easiest mounting** by means of a tilting hinge "Sch" or "Sch 1" or directly onto metal fused sightglasses, by tilting bolt M4
- For use in version "view **and** light through **one** assembly" as well as for the two port system, even for very small sightglass diameters
- **Robust construction and high reliability** for even rough industrial applications

Application:

On sightglasses to DIN 28120 **from DN 25**
 On sightglasses to DIN 28121 **from DN 40**
 On screwed sightglasses similar to DIN 11851 **from DN 32**
 On metal fused sightglasses
 On pipeline flow indicators (in-line sightglasses)

Operating conditions:

Independent of internal vessel pressure and vacuum.

Construction:

Housing and fixation elements **entirely in stainless steel**. Cable gland M12, vertical. LED module with integrated glass disc and gasket (resistant against corrosion and alteration). On request with ON-OFF switch "E" or built-in, sealed lever push-button for momentary operation "D".

Technical data:

Terminal voltage: 22 - 26 V AC/DC
 Power: 2 W
 Light source: LED-module (with 20 diodes)
 Weight: 0,20 kg (MVLR 2 LED without fixation)
0,24 kg (MVLR 2 LED D or E without fixation)
Fixation «Sch» 0,03 kg, fixation «Sch1» 0,03 kg

Enclosure protection degree:

IP 65, dust and spray water tight, to EN 60529 / DIN VDE 0470 part 1.

Admitted for use in food processing industries.